



Central Kentucky  
Management  
Services, Inc.

FINANCIAL  
REPORT  
2010

**Central Kentucky Management Services, Inc.**  
**A Component Unit of the University of Kentucky**

CONTENTS	PAGE
Independent Accountants' Report	1
Management's Discussion and Analysis	2
Financial Statements	
Statements of Net Assets	7
Statements of Revenues, Expenses and Changes in Net Assets	8
Statements of Cash Flows	9
Notes to Financial Statements	10
Board of Directors	

## Independent Accountants' Report on Financial Statements and Supplementary Information

Board of Directors  
Central Kentucky Management Services, Inc.  
Lexington, Kentucky

We have audited the accompanying basic financial statements of Central Kentucky Management Services, Inc. (CKMS), a not-for-profit corporation affiliated with and a component unit of the University of Kentucky, as of and for the years ended June 30, 2010 and 2009, as listed in the table of contents. These financial statements are the responsibility of CKMS's management. Our responsibility is to express an opinion on these financial statements based on our audits

We conducted our audits in accordance with auditing standards generally accepted in the United States of America. Those standards require that we plan and perform the audits to obtain reasonable assurance about whether the financial statements are free of material misstatement. An audit includes examining, on a test basis, evidence supporting the amounts and disclosures in the financial statements. An audit also includes assessing the accounting principles used and significant estimates made by management, as well as evaluating the overall financial statement presentation. We believe that our audits provide a reasonable basis for our opinion.

In our opinion, the financial statements referred to above present fairly, in all material respects, the financial position of CKMS as of June 30, 2010 and 2009, and the changes in its financial position and its cash flows for the years then ended in conformity with accounting principles generally accepted in the United States of America.

The accompanying management's discussion and analysis, as listed in the table of contents, is not a required part of the basic financial statements but is supplementary information required by the Governmental Accounting Standards Board. We have applied certain limited procedures, which consisted principally of inquiries of management regarding the methods of measurement and presentation of the required supplementary information. However, we did not audit the supplementary information and express no opinion on it.

*BKD, LLP*

September 30, 2010

# Management's Discussion and Analysis

Central Kentucky Management Services, Inc.'s (CKMS) Management's Discussion and Analysis (MD&A) provides an overview of the financial position and activity of CKMS for the years ended June 30, 2010 and 2009. This discussion has been prepared by management and should be read in conjunction with the accompanying financial statements and the notes appearing in the report.

## Financial Highlights

- The financial statements for FY 2009-2010 report a strong financial condition at June 30, 2010. Revenues for the year were significantly above budgeted expectations.
- Total assets decreased \$161,000 or 17.8%. The most significant components of this change were decreases of \$86,000 in cash and cash equivalents and \$75,000 in capital assets, net of depreciation.
- Total liabilities decreased \$86,000 or 16.2%. This change was due to decreases of \$74,000 in the escrow account payable to the UK HealthCare Hospital System and \$12,000 in accrued liabilities.
- Total net assets decreased \$75,000 to \$300,000.
- Operating revenues increased \$551,000 to \$6.6 million.
- Operating expenses increased \$587,000 to \$6.7 million.

## Using the Annual Report

This financial report consists of three financial statements: the Statement of Net Assets; the Statement of Revenues, Expenses and Changes in Net Assets; and the Statement of Cash Flows. These financial statements are prepared in accordance with Governmental Accounting Standards Board (GASB) Statement No. 35, *Basic Financial Statements – and Management's Discussion and Analysis – for Public Colleges and Universities*.

One of the most important questions asked about CKMS's finances is whether CKMS is better off as a result of the year's activities. One key to answering this question is the financial statements of CKMS. The Statement of Net Assets; the Statement of Revenues, Expenses and Changes in Net Assets; and the Statement of Cash Flows present financial information on CKMS in a format similar to that used by corporations and present a long-term view of CKMS's finances. CKMS's net assets (the difference between assets and liabilities) are one sign of CKMS's financial health. Over time, increases or decreases in net assets indicate the improvement or erosion of CKMS's financial health.

The Statement of Net Assets includes all assets and liabilities. It is prepared under the accrual basis of accounting, whereby revenues and assets are recognized when the service is provided and expenses and liabilities are recognized when others provide the service, regardless of when cash is exchanged.

The Statement of Revenues, Expenses and Changes in Net Assets presents the revenues earned and expenses incurred during the year. Activities are reported as either operating or non-operating. GASB 35 requires investment income to be classified as non-operating revenues. The utilization of long-lived assets, referred to as Capital Assets, is reflected in the financial statements as depreciation, which amortizes the cost of an asset over its expected useful life.

Another important factor to consider when evaluating financial viability is CKMS's ability to meet financial obligations as they become due. The Statement of Cash Flows presents information related to cash inflows and outflows, summarized by operating, capital, financing and investing activities.

## Reporting Entity

Central Kentucky Management Services, Inc. provides collection services for the health care receivables of the University of Kentucky (the University) and its affiliated corporations. Commission revenues are received from these entities and the excess of revenues over expenditures is distributed back to these entities.

CKMS is considered to be an affiliate and component unit of the University of Kentucky because the Board of Directors is appointed by the President of the University and the officers of CKMS are also officers of the University.

## Condensed Financial Information

### Statements of Net Assets

	2010	2009	2008
<b>ASSETS</b>			
Current assets	\$ 443,739	\$ 529,815	\$ 512,103
Noncurrent assets	299,757	374,941	409,578
Total Assets	<u>743,496</u>	<u>904,756</u>	<u>921,681</u>
<b>LIABILITIES</b>			
Current liabilities	443,739	529,815	512,103
Total Liabilities	<u>443,739</u>	<u>529,815</u>	<u>512,103</u>
<b>NET ASSETS</b>			
Invested in capital assets, net of related debt	<u>\$ 299,757</u>	<u>\$ 374,941</u>	<u>\$ 409,578</u>

**Assets.** As of June 30, 2010, CKMS's total assets amounted to \$743,000. Cash and cash equivalents, totaling \$430,000 or 57.9% of total assets, represented CKMS's largest asset. Investment in capital assets, net of depreciation, represented CKMS's second largest asset, totaling \$300,000 or 40.3% of total assets.

Total assets decreased \$161,000 during the year ended June 30, 2010, driven by decreases in cash and cash equivalents of \$86,000 and investment in capital assets, net of depreciation, of \$75,000.

**Liabilities.** At June 30, 2010, CKMS's liabilities decreased 16.2%, to a total of \$444,000. An escrow account payable to the UK HealthCare Hospital System was CKMS's largest liability (approximately \$265,000 or 59.7%). The remaining liabilities, totaling \$179,000 or 40.3%, were for accrued wages, expenses and payroll withholdings.

**Net Assets.** Net assets at June 30, 2010 totaled \$300,000, or 40.3% of total assets, all of which were net assets invested in capital, net of related debt.

**2009 versus 2008.** Total assets decreased \$17,000 during the year ended June 30, 2009, primarily due to a decrease of \$34,000 in capital assets, net of depreciation, as a result of depreciation expense offset by an increase in cash and cash equivalents of \$17,000. Total liabilities increased \$18,000 or 3.5% due to an increase of \$38,000 in accrued liabilities offset by a decrease in the escrow account payable to the UK HealthCare Hospital System of \$20,000. Total net assets decreased \$35,000, or 8.5%, in 2009 from 2008.

**Statements of Revenues, Expenses and Changes in Net Assets**

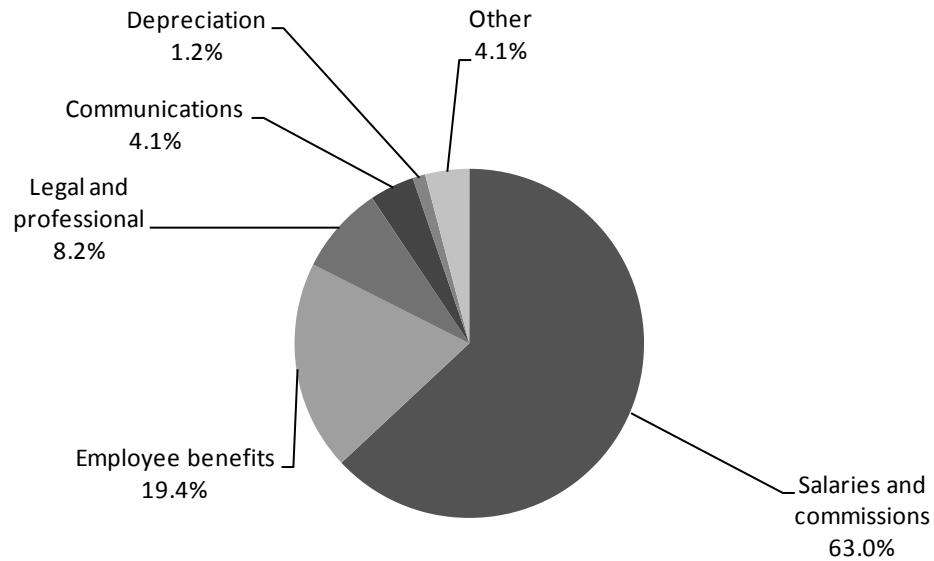
	<u>2010</u>	<u>2009</u>	<u>2008</u>
<b>OPERATING REVENUES</b>			
Collections	\$ 312,760,341	\$ 295,188,722	\$ 252,679,168
Remittance to the University of Kentucky and its affiliated corporations	<u>(306,157,203)</u>	<u>(289,136,430)</u>	<u>(247,320,185)</u>
Total operating revenues	<u>6,603,138</u>	<u>6,052,292</u>	<u>5,358,983</u>
<b>OPERATING EXPENSES</b>			
Salaries and commissions	4,210,218	3,884,218	3,379,170
Employee benefits	1,296,707	1,148,471	927,858
Legal and professional	545,829	399,029	513,191
Communications	275,940	271,354	311,489
Depreciation	79,834	95,592	97,703
Other	271,195	293,596	220,797
Total operating expenses	<u>6,679,723</u>	<u>6,092,260</u>	<u>5,450,207</u>
<b>OPERATING LOSS</b>	<u>(76,585)</u>	<u>(39,968)</u>	<u>(91,224)</u>
<b>NONOPERATING REVENUES</b>			
Investment income	1,401	5,331	25,905
Total nonoperating revenues	<u>1,401</u>	<u>5,331</u>	<u>25,905</u>
Total decrease in net assets	(75,184)	(34,637)	(65,319)
<b>Net assets, beginning of year</b>	<u>374,941</u>	<u>409,578</u>	<u>474,897</u>
<b>Net assets, end of year</b>	<u>\$ 299,757</u>	<u>\$ 374,941</u>	<u>\$ 409,578</u>

**2010.** Operating revenues increased \$551,000 or 9.1% to \$6.6 million for the year ended June 30, 2010 as a result of additional Kentucky Medical Services Foundation (KMSF) and UK HealthCare Hospital System bad debt collections. The only source of operating revenue for CKMS was collections for health care receivables for the University and its affiliated corporations.

Operating expenses, including \$80,000 of depreciation, totaled \$6.7 million. Of this amount, \$4.2 million or 63.0% was used for salaries and commissions. Operating expenses increased \$587,000 or 9.6% from the prior year. The increase is primarily due to increases in salary and benefits.

**2009 versus 2008.** During the year ended June 30, 2009, operating revenues increased \$693,000 or 12.9% due primarily to increased collections of 16.8%, offset by the increase in the remittance to the University of Kentucky and affiliated corporations. Operating expenses increased approximately \$642,000 or 11.8% due primarily to an increase in employees to handle the additional UK HealthCare System and Kentucky Medical Service Foundation volume.

## TOTAL OPERATING EXPENSE



### Statements of Cash Flows

Another way to assess the financial health of an organization is to look at the Statement of Cash Flows. The primary purpose of the Statement of Cash Flows is to provide information about the cash receipts and cash payments made by CKMS during the period. The Statement of Cash Flows also helps financial statement readers assess CKMS's:

- ability to generate future net cash flows,
- ability to meet obligations as they become due, and
- need for external financing.

	<u>2010</u>	<u>2009</u>	<u>2008</u>
<b>CASH PROVIDED (USED) BY:</b>			
Operating activities	\$ (83,113)	\$ 73,123	\$(111,395)
Capital financing activities	(4,650)	(60,955)	(32,384)
Investing activities	<u>1,401</u>	<u>5,331</u>	<u>25,905</u>
Net increase (decrease) in cash and cash equivalents	(86,362)	17,499	(117,874)
<b>Cash and cash equivalents, beginning of year</b>	<u>516,442</u>	<u>498,943</u>	<u>616,817</u>
<b>Cash and cash equivalents, end of year</b>	<u><u>\$ 430,080</u></u>	<u><u>\$ 516,442</u></u>	<u><u>\$ 498,943</u></u>

**2010.** Cash receipts for operating activities of \$6.6 million relate to the collection of revenues, net of remittances to the University and other clients. Cash payments for operating activities were primarily made to employees for salaries, commissions and benefits of approximately \$5.5 million. Cash used by capital financing activities was expended on the acquisition of capital assets.

**2009 versus 2008.** The net increase in cash was \$17,000 due primarily to an increase in cash provided by operating activities offset by an increase in cash used by capital financing activities.

### **Capital Asset and Debt Administration**

**Capital Assets.** Capital assets, net of accumulated depreciation, totaled \$300,000 at June 30, 2010, a net decrease of approximately \$75,000 from the prior year. Capital assets represent purchases of equipment. Approximately \$33,000 was expended on additions to equipment during fiscal year 2009-2010 and net accumulated depreciation increased \$80,000. Equipment with a net value of \$28,000 was disposed of during the year.

**Debt.** CKMS does not have any debt outstanding as of June 30, 2010.

### **Factors Impacting Future Periods**

The quantity and quality of health care receivables of the University and its related corporations could affect future financial results. Healthcare reform will initiate significant reforms to the U.S. healthcare system. CKMS cannot predict the potential impact these reforms may have on future financial results.



**CENTRAL KENTUCKY MANAGEMENT SERVICES, INC.**  
**A COMPONENT UNIT OF THE UNIVERSITY OF KENTUCKY**  
**STATEMENTS OF NET ASSETS**  
**JUNE 30, 2010 AND 2009**

	<u>2010</u>	<u>2009</u>
<b>ASSETS</b>		
<b>Current Assets</b>		
Cash and cash equivalents	\$ 430,080	\$ 516,442
Other current assets	13,659	13,373
Total current assets	<u>443,739</u>	<u>529,815</u>
<b>Noncurrent Assets</b>		
Capital assets, net	<u>299,757</u>	<u>374,941</u>
Total noncurrent assets	<u>299,757</u>	<u>374,941</u>
Total assets	<u>743,496</u>	<u>904,756</u>
 <b>LIABILITIES</b>		
<b>Current Liabilities</b>		
Escrow account - University of Kentucky Hospital and affiliates	264,975	339,114
Accounts payable and accrued liabilities	178,764	190,701
Total current liabilities	<u>443,739</u>	<u>529,815</u>
Total liabilities	<u>443,739</u>	<u>529,815</u>
 <b>NET ASSETS</b>		
Invested in capital assets, net of related debt	<u>\$ 299,757</u>	<u>\$ 374,941</u>

See notes to financial statements

**CENTRAL KENTUCKY MANAGEMENT SERVICES, INC.**  
**A COMPONENT UNIT OF THE UNIVERSITY OF KENTUCKY**  
**STATEMENTS OF REVENUES, EXPENSES AND CHANGES IN NET ASSETS**  
**FOR THE YEARS ENDED JUNE 30, 2010 AND 2009**

	<u>2010</u>	<u>2009</u>
<b>OPERATING REVENUES</b>		
Collections	\$ 312,760,341	\$ 295,188,722
Less: Remittance to the University of Kentucky and its affiliated corporations	<u>(306,157,203)</u>	<u>(289,136,430)</u>
Total operating revenues	<u>6,603,138</u>	<u>6,052,292</u>
<b>OPERATING EXPENSES</b>		
Salaries and commissions	4,210,218	3,884,218
Employee benefits	1,296,707	1,148,471
Legal and professional	545,829	399,029
Communications	275,940	271,354
Depreciation	79,834	95,592
Other expenses	<u>271,195</u>	<u>293,596</u>
Total operating expenses	<u>6,679,723</u>	<u>6,092,260</u>
Net income (loss) from operations	<u>(76,585)</u>	<u>(39,968)</u>
<b>NONOPERATING REVENUES (EXPENSES)</b>		
Investment income	<u>1,401</u>	<u>5,331</u>
Net nonoperating revenues (expenses)	<u>1,401</u>	<u>5,331</u>
Net income (loss)	<u>(75,184)</u>	<u>(34,637)</u>
Increase (decrease) in net assets	<u>(75,184)</u>	<u>(34,637)</u>
<b>NET ASSETS, beginning of year</b>	<u>374,941</u>	<u>409,578</u>
<b>NET ASSETS, end of year</b>	<u>\$ 299,757</u>	<u>\$ 374,941</u>

See notes to financial statements

**CENTRAL KENTUCKY MANAGEMENT SERVICES, INC.**  
**A COMPONENT UNIT OF THE UNIVERSITY OF KENTUCKY**  
**STATEMENTS OF CASH FLOWS**  
**FOR THE YEARS ENDED JUNE 30, 2010 AND 2009**

	<u>2010</u>	<u>2009</u>
<b>CASH FLOWS FROM OPERATING ACTIVITIES</b>		
Collections	\$ 312,760,341	\$ 295,188,722
Remittances to University of Kentucky and its affiliated corporations	(306,231,342)	(289,156,100)
Payments to vendors and contractors	(841,081)	(651,059)
Salaries, wages and benefits	(5,499,836)	(5,014,844)
Other receipts (payments)	(271,195)	(293,596)
Net cash provided (used) by operating activities	<u>(83,113)</u>	<u>73,123</u>
<b>CASH FLOWS FROM CAPITAL AND RELATED FINANCING ACTIVITIES</b>		
Purchases of capital assets	(32,850)	(60,955)
Proceeds from sale of capital assets	28,200	-
Net cash (used) by capital and related financing activities	<u>(4,650)</u>	<u>(60,955)</u>
<b>CASH FLOWS FROM INVESTING ACTIVITIES</b>		
Interest on cash and cash equivalents	1,401	5,331
Net cash provided (used) by investing activities	<u>1,401</u>	<u>5,331</u>
<b>NET INCREASE (DECREASE) IN CASH</b>	<u>(86,362)</u>	<u>17,499</u>
<b>CASH AND CASH EQUIVALENTS, beginning of year</b>	<u>516,442</u>	<u>498,943</u>
<b>CASH AND CASH EQUIVALENTS, end of year</b>	<u>\$ 430,080</u>	<u>\$ 516,442</u>
<b>Reconciliation of net income (loss) from operations to net cash provided (used) by operating activities:</b>		
Operating income (loss)	\$ (76,585)	\$ (39,968)
Adjustments to reconcile net income (loss) to net cash provided (used) by operating activities:		
Depreciation expense	79,834	95,592
Change in assets and liabilities:		
Other current assets	(286)	(213)
Escrow account	(74,139)	(19,670)
Accounts payable and accrued liabilities	(11,937)	37,382
<b>Net cash provided (used) by operating activities</b>	<u>\$ (83,113)</u>	<u>\$ 73,123</u>

See notes to financial statements

## NOTES TO FINANCIAL STATEMENTS

### 1. ORGANIZATION AND SUMMARY OF SIGNIFICANT ACCOUNTING POLICIES

#### Reporting Entity

Central Kentucky Management Services, Inc. (CKMS) provides collection services for the health care receivables of the University of Kentucky (the University) and its related corporations. All commission revenues are received from these entities and the excess of revenues over expenses is distributed back to these entities. CKMS is considered to be an affiliate and component unit of the University because the Board of Directors is appointed by the President of the University and officers of CKMS are also officers of the University.

#### Basis of Presentation

The accompanying financial statements have been prepared in accordance with accounting principles generally accepted in the United States of America as prescribed by the Governmental Accounting Standards Board (GASB). GASB establishes standards for external financial reporting for public colleges and universities and requires that resources be classified for accounting and reporting purposes into the following net assets categories:

- Invested in capital assets, net of related debt: Capital assets, net of accumulated depreciation and outstanding principal balances of debt attributable to the acquisition, construction or improvement of those assets.
- Restricted:
  - Nonexpendable* – Net assets subject to externally imposed stipulations that they be maintained permanently by CKMS.
  - Expendable* – Net assets whose use by CKMS is subject to externally imposed stipulations that can be fulfilled by actions of CKMS pursuant to those stipulations or that expire by the passage of time.
- Unrestricted: Net assets whose use by CKMS is not subject to externally imposed stipulations. Unrestricted net assets may be designated for specific purposes by action of management or the Board of Directors or may otherwise be limited by contractual agreements with outside parties.

The financial statement presentation required by GASB Statement No. 35 is intended to provide a comprehensive, entity-wide perspective of CKMS's assets, liabilities, net assets, revenues, expenses, changes in net assets and cash flows.

Pursuant to GASB Statement No. 20, CKMS has elected to apply the provisions for all relevant pronouncements of the Financial Accounting Standards Board (FASB) that were issued on or before November 30, 1989, and do not conflict with or contradict GASB pronouncements.

#### Summary of Significant Accounting Policies

Accrual Basis. The financial statements have been prepared on the accrual basis of accounting. Under the accrual basis of accounting, revenues are recognized when earned and expenses are recorded when an obligation has been incurred. CKMS reports as a Business Type Activity (BTA) as defined by GASB 35. BTA's are those activities that are financed in whole or part by fees charged to external parties for goods and services.

Cash and Cash Equivalents. Cash and cash equivalents include investments with a maturity of three months or less.

Capital Assets. Capital assets are stated at cost at date of acquisition or, in the case of gifts, at fair market value at date of gift. Equipment with a unit cost of \$2,000 or more (\$1,000 for computers) and having an estimated useful life of greater than one year, is capitalized. Routine repairs and maintenance are charged to operating expense in the year in which the expense is incurred.

Depreciation of capital assets is computed on a straight-line basis over the estimated useful lives of the respective assets, generally 3 – 20 years for equipment.

Operating Activities. CKMS defines operating activities, as reported on the Statement of Revenues, Expenses, and Changes in Net Assets, as those that generally result from exchange transactions, such as payments received for providing goods and services and payments made for services and goods received. Nearly all of CKMS's revenues and expenses are from exchange transactions.

Income Taxes. CKMS is exempt from federal income tax under the Internal Revenue Code as a section 501(c)(3) organization.

Use of Estimates. The preparation of financial statements in conformity with accounting principles generally accepted in the United States of America requires management to use estimates and assumptions that affect amounts reported in the financial statements and accompanying notes. Actual results could differ from those estimates. The accompanying financial statements include estimates for items such as depreciable lives on capital assets and accrued liability accounts.

## 2. DEPOSITS AND INVESTMENTS

The fair value and cost of deposits and investments, by type, at June 30, 2010 and 2009 are as follows:

	<u>2010</u>	<u>2009</u>
Cash on deposit with the University of Kentucky	<u>\$430,080</u>	<u>\$516,442</u>

**Deposit and investment policies.** CKMS follows the deposit and investment policies established by the University's Board of Trustees. Such policies are developed to establish and maintain sound financial management practices for the investment and management of CKMS's funds.

For purposes of investment management, CKMS's deposits and investments can be grouped into one significant category, as follows: cash on deposit with the University, which the University invests in deposits and repurchase agreements with banks and the Commonwealth of Kentucky (the Commonwealth).

Cash on deposit with the University is managed based on the University's Overnight and Short-Term Investment Policy approved by the Investment Committee of the University's Board of Trustees.

**Deposit and investment risks.** CKMS's deposits and investments are exposed to various risks, including credit, interest rate and foreign currency risk, as discussed in more detail below:

**Credit Risk.** Credit risk is the risk that the issuer or other counterparty to an investment will not fulfill its obligation, causing CKMS to experience a loss of principal. Cash on deposit with the University is governed by policy that minimizes risk in several ways. Deposits are governed by state law which requires full collateralization. Credit risk on repurchase agreements is mitigated by requiring the issuing financial institution's pledge of specific U.S. treasury or agency securities, held in the name of

the University by the Federal Reserve Bank. Credit risk on repurchase agreements with the Commonwealth is mitigated by the Commonwealth's requirement that providers of overnight repurchase agreements collateralize these investments at 102% of face value with U.S. treasury or agency securities, pledged in the name of the Commonwealth.

**Custodial Credit Risk.** Custodial credit risk is the risk that, in the event of the failure of the counterparty, CKMS will not be able to recover the value of its investment or collateral securities that are in possession of an outside party. Cash on deposit with the University is invested in deposits and repurchase agreements held in the University's name, and in deposits and repurchase agreements with the Commonwealth that are held in the Commonwealth's name. The University maintains records evidencing CKMS's ownership interest in such balances.

**Concentrations of Credit Risk.** CKMS's investments can be exposed to a concentration of credit risk if significant amounts are invested in any one issuer. Cash on deposit with the University is not limited as to the maximum amount that may be invested in one issuer. However, all such investments in excess of Federal Depository Insurance are required to be fully collateralized by U.S. treasury and/or U.S. agency securities or other similar investments as provided by KRS 41.240.

At June 30, 2010, CKMS had no underlying investments in any one issuer that represented more than 5% of total investments.

**Interest Rate Risk.** Interest rate risk is the risk that changes in interest rates will adversely affect the fair value of an investment. Cash on deposit with the University has limited exposure to interest rate risk due to the short term nature of the investment. The University requires that all deposits and overnight repurchase agreements be available for use on the next business day.

**Foreign Currency Risk.** Foreign currency risk is the risk that changes in exchange rates will adversely affect the fair value of an investment or deposit. CKMS is not exposed to foreign currency risk.

### 3. CAPITAL ASSETS, NET

Capital assets as of June 30, 2010 and 2009 are summarized as follows:

	2010			
	Beginning Balance	Additions	Deletions	Ending Balance
Equipment	\$ 1,194,214	\$ 32,850	\$ 101,202	\$ 1,125,862
Accumulated depreciation	819,273	79,834	73,002	826,105
Capital assets, net	<u>\$ 374,941</u>	<u>\$ (46,984)</u>	<u>\$ 28,200</u>	<u>\$ 299,757</u>
	2009			
	Beginning Balance	Additions	Deletions	Ending Balance
Equipment	\$ 1,133,259	\$ 60,955	\$ -	\$ 1,194,214
Accumulated depreciation	723,681	95,592	-	819,273
Capital assets, net	<u>\$ 409,578</u>	<u>\$ (34,637)</u>	<u>\$ -</u>	<u>\$ 374,941</u>

#### 4. ACCOUNTS PAYABLE AND ACCRUED LIABILITIES

Accounts payable and accrued liabilities as of June 30, 2010 and 2009 are as follows:

	<u>2010</u>	<u>2009</u>
Accounts payable	\$ 5,459	\$ 24,187
Accrued wages, expenses and payroll taxes	<u>173,305</u>	<u>166,514</u>
Total	<u>\$ 178,764</u>	<u>\$ 190,701</u>

#### 5. PENSION PLAN

Eligible staff members of CKMS are participants in the University of Kentucky Retirement Plan. Under this plan, CKMS and plan participants make contributions to provide retirement benefits for employees. All payments are vested immediately for employees hired before January 1, 2010. For employees hired after that date, employee contributions are vested after five years. CKMS contributes 10% of eligible compensation and employees contribute 5% of eligible compensation. CKMS's share of the costs of these benefits was \$400,000 and \$368,000 in 2010 and 2009, respectively.

#### 6. LEASES

Office space is provided to CKMS by the UK HealthCare Hospital System. The fair rental values of the office space including utilities were \$326,000 and \$290,000 for 2010 and 2009, respectively. CKMS does not record the fair rental value of the UK HealthCare Hospital System's support in its financial statements.

#### 7. RISK MANAGEMENT

CKMS is exposed to various risks of loss related to torts; theft of, damages to, and destruction of assets; errors and omissions; injuries to employees; and natural disasters. These risks are covered by commercial insurance, extension of coverage by the University's participation in an insurance risk retention group or by self-insurance. There have been no significant reductions in insurance coverage from 2009 to 2010. Settlements have not exceeded insurance coverage during the past three years.

The University is self-insured for the long-term disability income program and has established a 501(c)(9) trust for purposes of paying claims and establishing necessary reserves. The University also self-insures certain employee benefits, unemployment claims, and a long-term disability supplemental reserve, to the extent not covered by insurance. CKMS employees are covered under both of these University plans.

#### 8. HEALTH INSURANCE BENEFITS FOR RETIREES

The University administers a single-employer defined benefit healthcare plan including medical and prescription drug benefits. CKMS may participate in this plan, which provides lifetime healthcare insurance benefits for eligible retirees and their surviving spouses. Human Resources Policies and Procedures define retiree health benefits and can be amended by the President of the University as delegated by the University's Board of Trustees.

The University provides a pre-65 credit of up to 90% of the "true retiree" cost of the least expensive pre-65 medical plan. For post-65 benefits, the University provides a credit equal to 90% of the "true retiree" cost of the post-65 medical plan. However, retirees must pay the greater of \$25 per month or 10 percent of total plan cost.

The University has established a trust fund to segregate plan assets, and currently plans to contribute amounts to the trust fund sufficient to fully fund the annual required contribution (ARC), an amount actuarially determined in accordance with the parameters of GASB Statement 45.

CKMS has recognized its share of the contribution in employee benefit costs and has no additional liability for this benefit at June 30, 2010.

## **9. CURRENT ECONOMIC CONDITIONS**

The current protracted economic decline, including the rising unemployment rate, has made it difficult for certain patients to pay for services rendered. As employers make adjustments to health insurance plans, particularly in response to healthcare reform, or more patients become unemployed, services provided to self-pay and other payers may significantly impact UK HealthCare's and Kentucky Medical Services Foundation's patient receivables, which could have an adverse impact on CKMS future operating results. The financial statements have been prepared using values and information currently available to CKMS.



## BOARD OF DIRECTORS

Michael Karpf, President and Chair  
Frank Butler, Vice President  
Harry Dadds, Secretary  
Sergio Melgar, Treasurer  
Angie Martin, Assistant Treasurer



**see blue.™**

The University of Kentucky is committed to a policy of providing opportunities to people regardless of economic or social status and will not discriminate on the basis of race, color, ethnic origin, creed, religion, political belief, sex, sexual orientation, marital status, age, veteran status, or physical or mental disability.

The University of Kentucky is an Equal Opportunity University.  
Questions concerning compliance with regulations may be directed to the Equal Opportunity Office,  
13 Main Building, University of Kentucky, Lexington, KY 40506-033.  
(859) 257-8927 or at [www.uky.edu/evpfa/eeo](http://www.uky.edu/evpfa/eeo).

[www.uky.edu](http://www.uky.edu)